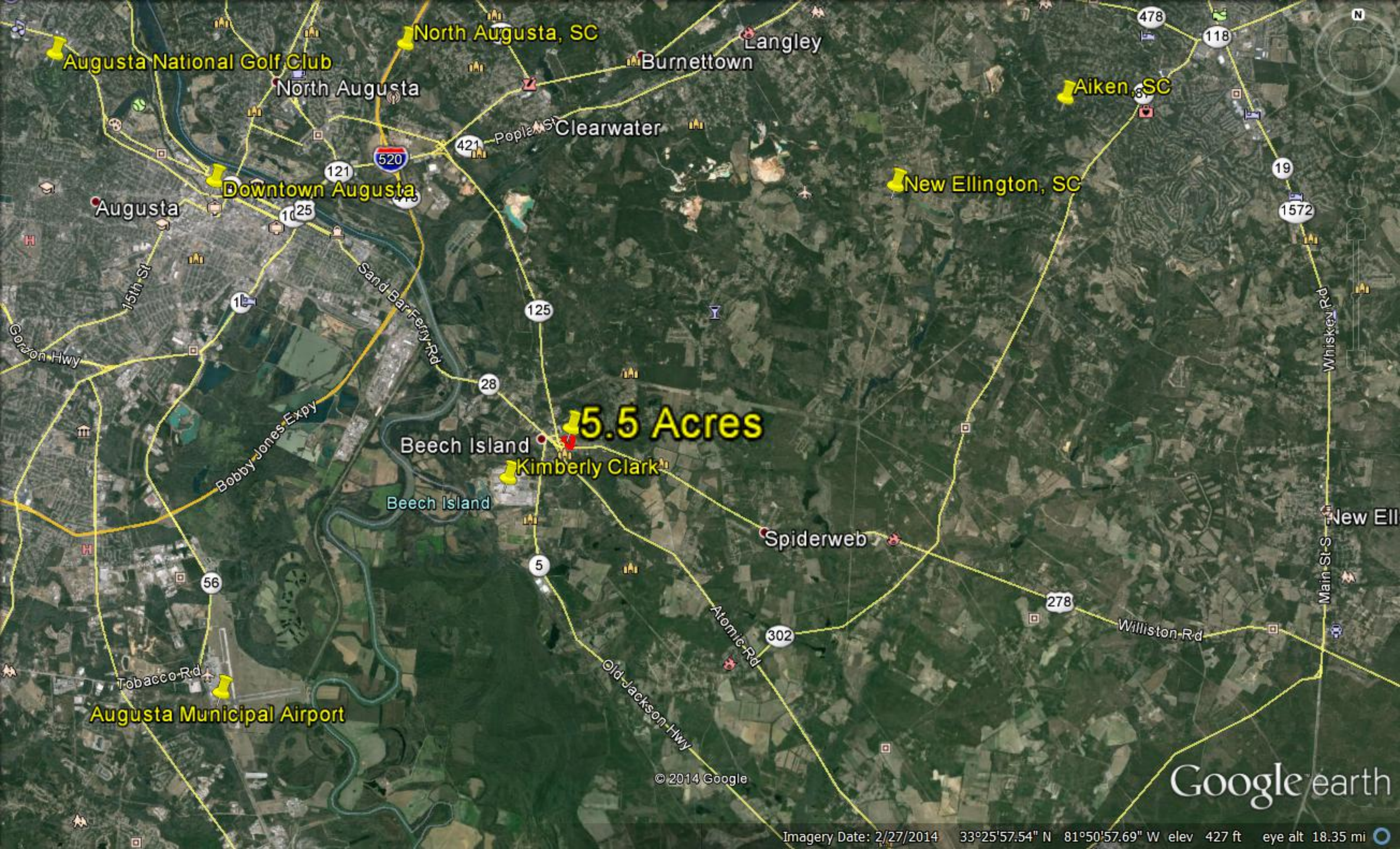


## AVAILABLE FOR SALE | ENLOE - BEECH ISLAND BUSINESS SITE



Current Status:	AVAILABLE
Location:	Well located at the interchange of State Rte 125 (Atomic Road) and Sand Bar Ferry Road. Adjacent to planned "The Village @ Beech Island", a Master Planned Community of new residential and commercial, Beech Island Garden Apartments and Beech Island Business Park - Beech Island, South Carolina - Augusta, GA MSA
Size:	5.5 Acre Business/Light Industrial Site
Zoning:	Commercial/Light Industrial
Utilities:	Available in vicinity
Description:	Center of business activity between downtown Augusta, GA, southern North Augusta, West-Aiken, South Carolina. Several major employers nearby, providing 14,000+ daytime workers in vicinity





Augusta National Golf Club

North Augusta, SC

Langley

Burnettown

North Augusta

Aiken, SC

Clearwater

New Ellington, SC

Downtown Augusta

Augusta

Beech Island

Kimberly Clark

5.5 Acres

Beech Island

Spiderweb

New Ell

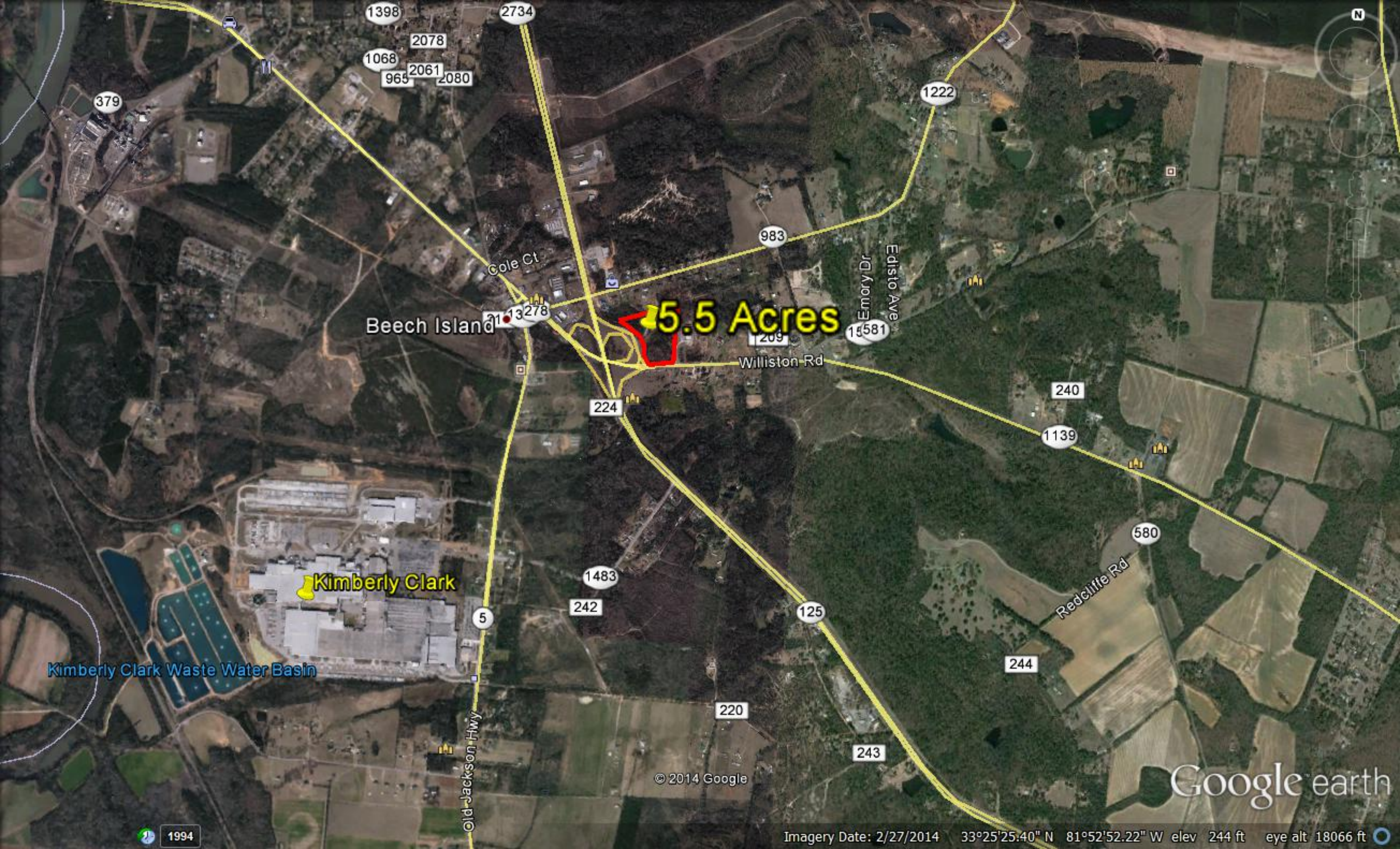
Augusta Municipal Airport

© 2014 Google

Google earth

Imagery Date: 2/27/2014 33°25'57.54" N 81°50'57.69" W elev 427 ft eye alt 18.35 mi





Beech Island

5.5 Acres

Kimberly Clark

Kimberly Clark Waste Water Basin

Old Jackson Hwy

Cole Ct

Williston Rd

Emory Dr  
Edisto Ave

Redcliffe Rd

© 2014 Google

Google earth

Imagery Date: 2/27/2014 33°25'25.40" N 81°52'52.22" W elev 244 ft eye alt 18066 ft

1994