

AVAILABLE FOR SALE | 16 ON POWDERHOUSE @ THOROUGHbred RUN



Current Status: **AVAILABLE**

Location: Very close to Pine Log Road and Whiskey Road intersection in Aiken, South Carolina. Close proximity to Aiken's convenient "around city loop road".

Size: 16 Acres for Residential Development

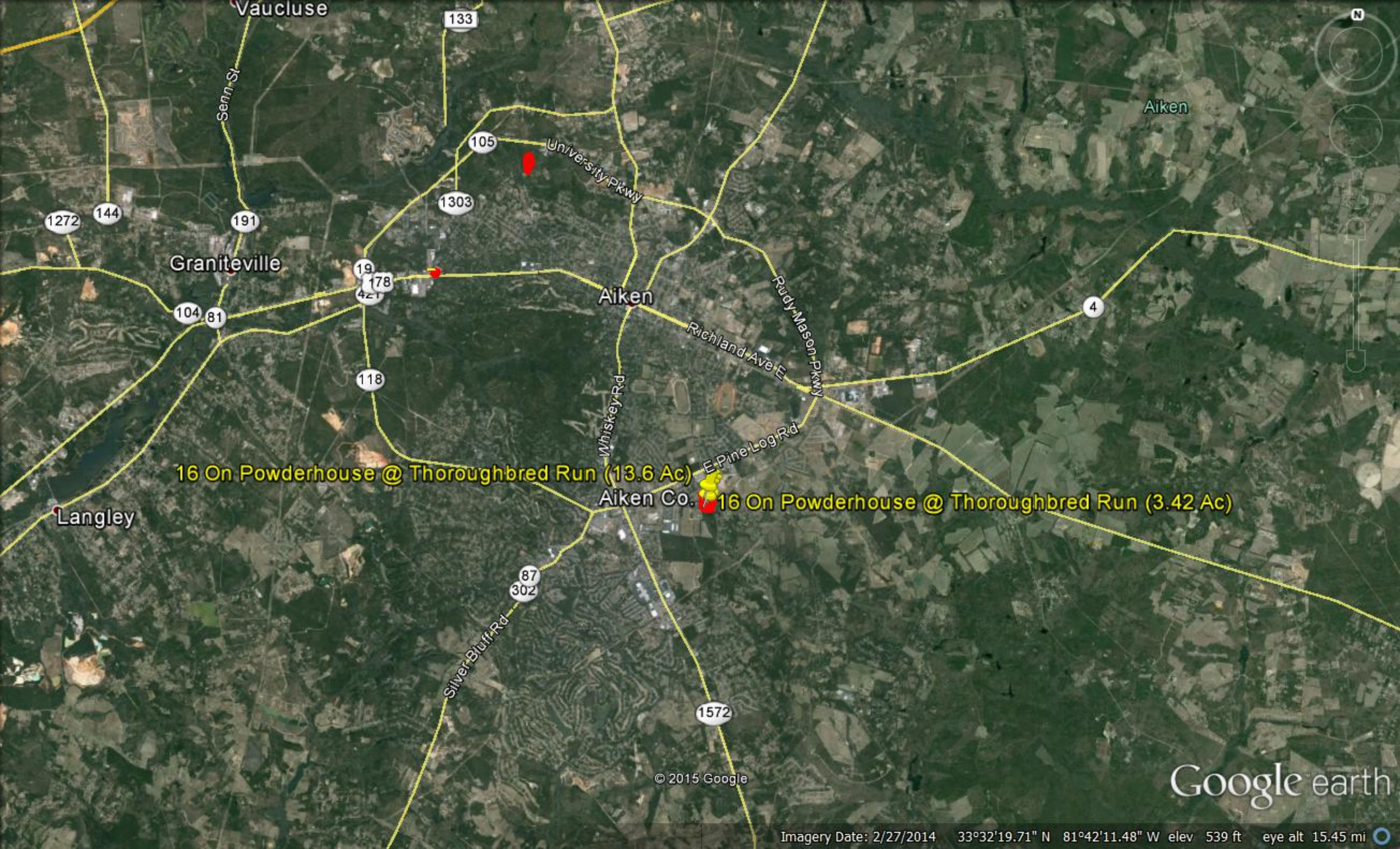
Parcel Number(s): Two parcels—1 @ 3.5 Acres, the second at 13.6 Acres
122-11-08-003 & 122-11-08-011

Zoning: Residential

Utilities: Available

Description: Adjacent to existing quality residential neighborhoods in central/south Aiken sub-market. New residential development located directly across street.

To learn more about the community, visit <http://www.visitaikensc.com> or <http://www.aikenchamber.net>



16 On Powderhouse @ Thoroughbred Run (13.6 Ac)

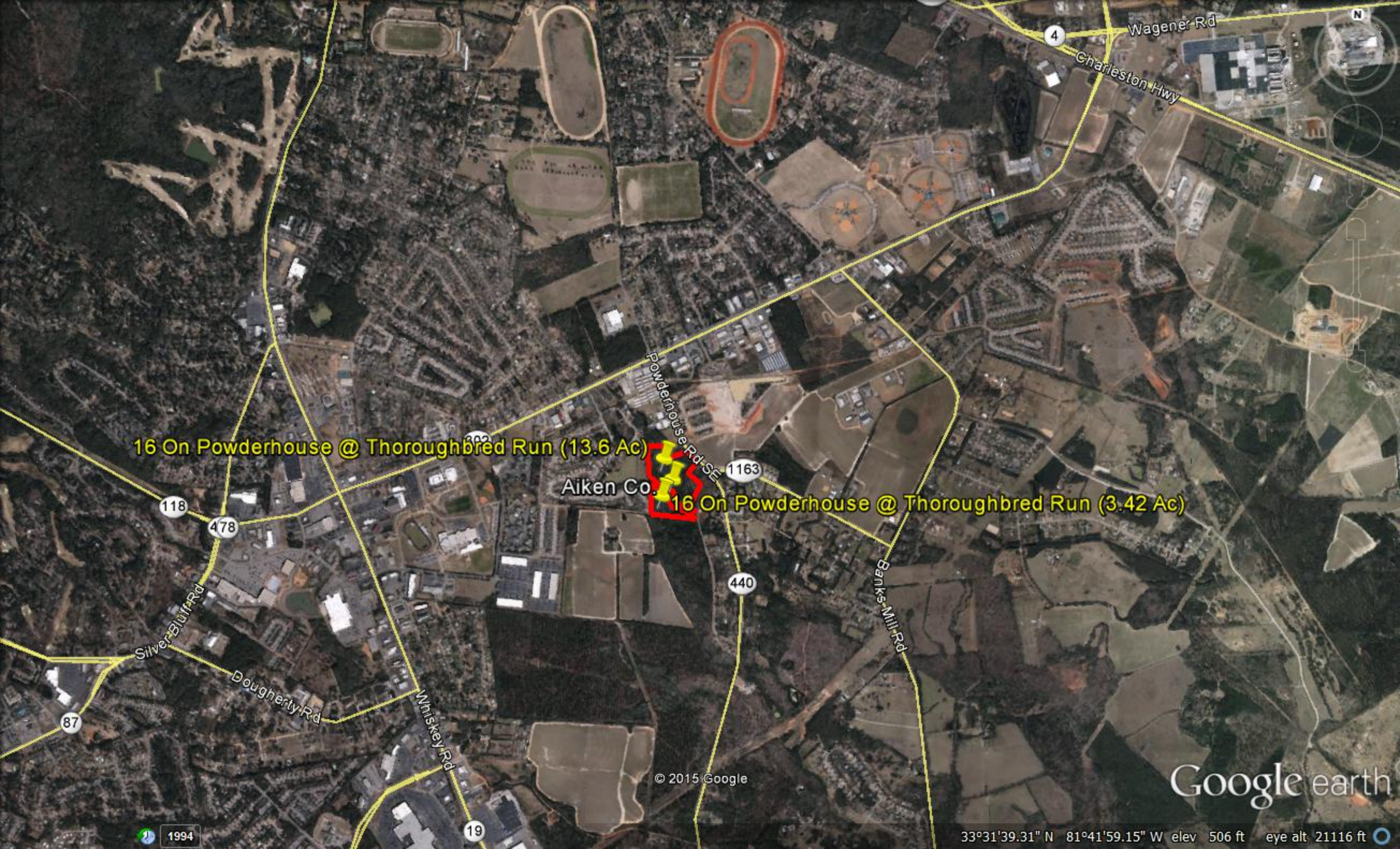
Aiken Co.

16 On Powderhouse @ Thoroughbred Run (3.42 Ac)

© 2015 Google

Google earth

Imagery Date: 2/27/2014 33°32'19.71" N 81°42'11.48" W elev 539 ft eye alt 15.45 mi



16 On Powderhouse @ Thoroughbred Run (13.6 Ac)

Aiken Co.

16 On Powderhouse @ Thoroughbred Run (3.42 Ac)

© 2015 Google

Google earth

1994

33°31'39.31" N 81°41'59.15" W elev 506 ft eye alt 21116 ft



16 On Powderhouse @ Thoroughbred Run (13.6 Ac)

Aiken Co.

16 On Powderhouse @ Thoroughbred Run (3.42 Ac)

© 2015 Google

Google earth

33°31'28.88" N 81°42'05.97" W elev 527 ft eye alt 4826 ft



16 On Powderhouse @ Thoroughbred Run (13.6 Ac)

Aiken Co.

16 On Powderhouse @ Thoroughbred Run (3.42 Ac)

Google earth

© 2015 Google

33°31'29.34" N 81°42'04.95" W elev -536 ft eye alt 2396 ft

1994